



section Fribourg

RAF



Winlink

HB9FG RMS Portable

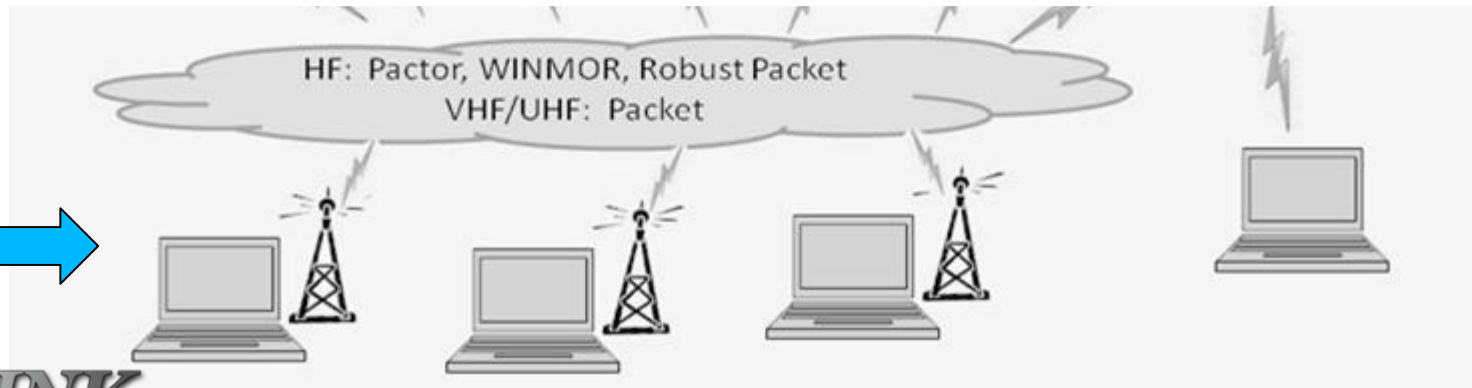




Structure Winlink 1/4

https://www.winlink.org/content/getting_started_winlink_and_winmor

Winlink Express – RMS Express

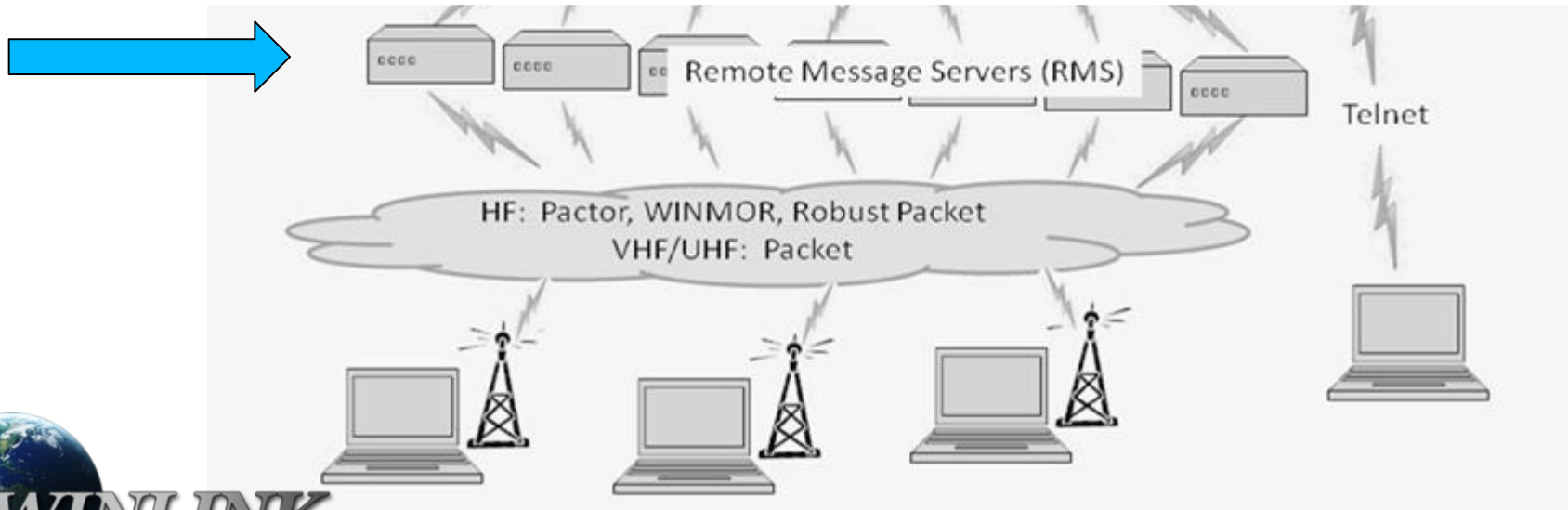




Structure Winlink 2/4

https://www.winlink.org/content/getting_started_winlink_and_winmor

Radio Message Server

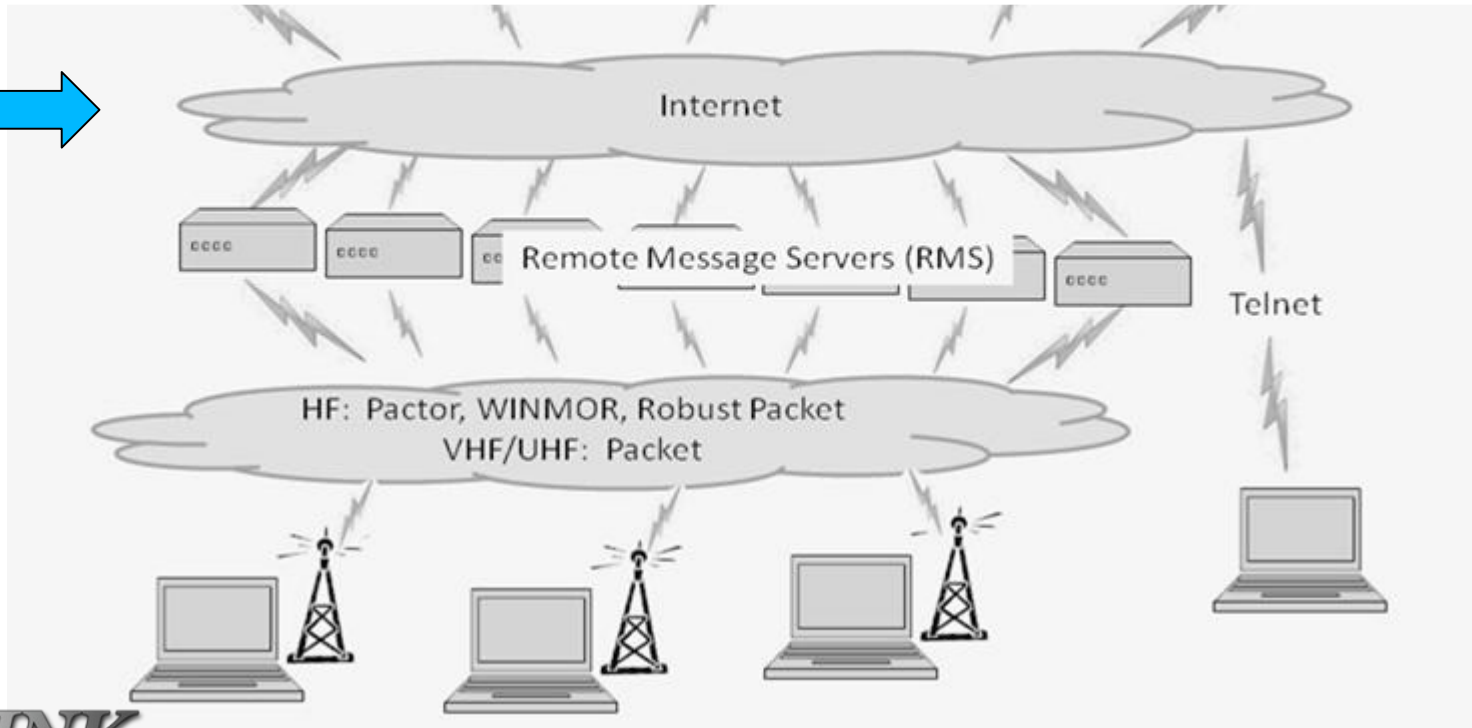




Structure Winlink 3/4

https://www.winlink.org/content/getting_started_winlink_and_winmor

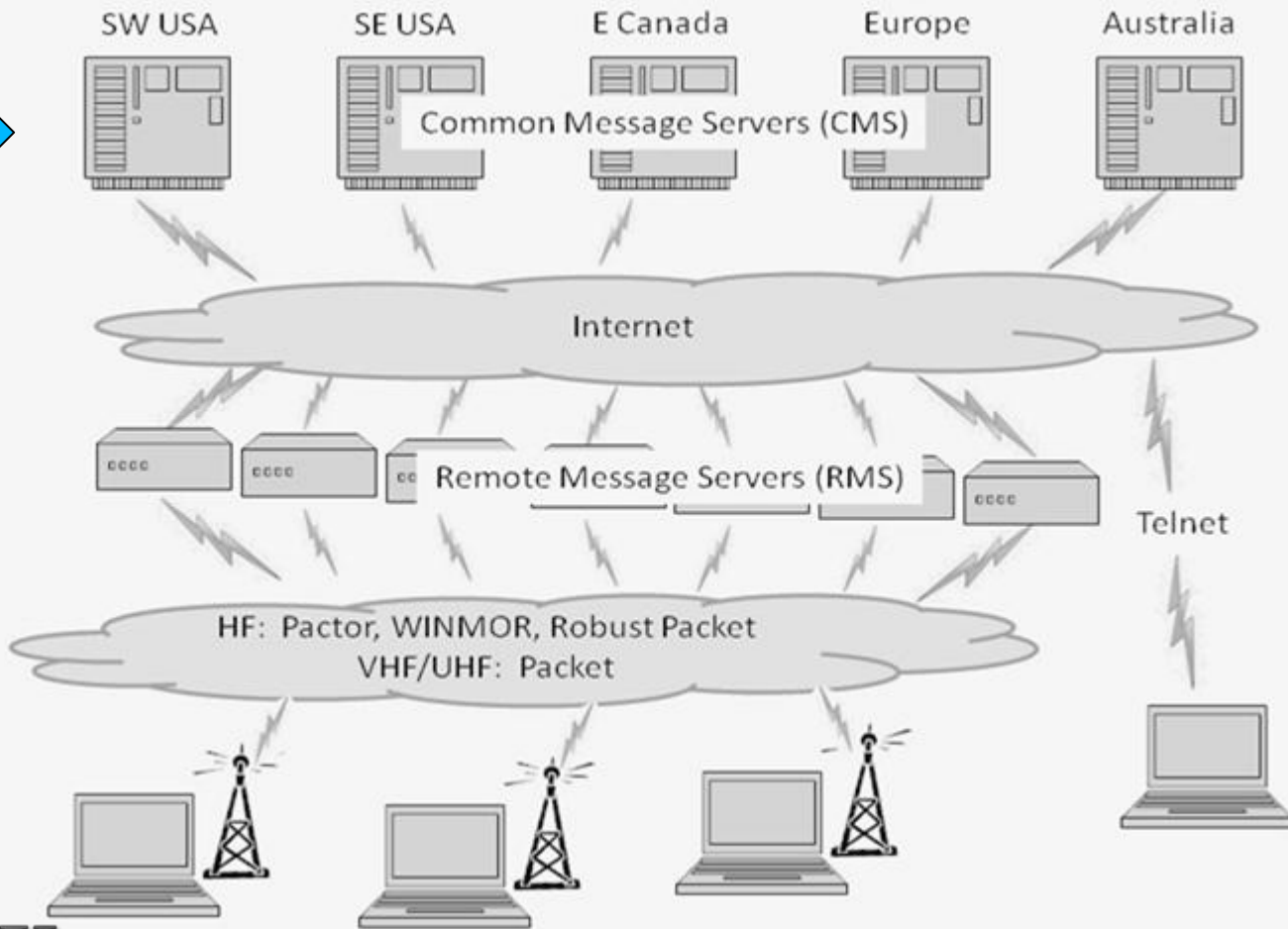
Internet





Structure Winlink 4/4

https://www.winlink.org/content/getting_started_winlink_and_winmor





Client Winlink

HF

- FACTOR
- WINMOR (obsolète)
- ARDOP
- VARA

TCP/IP

- TELNET

Satellite

- VARA SAT

VHF/UHF

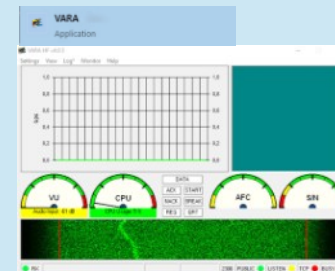
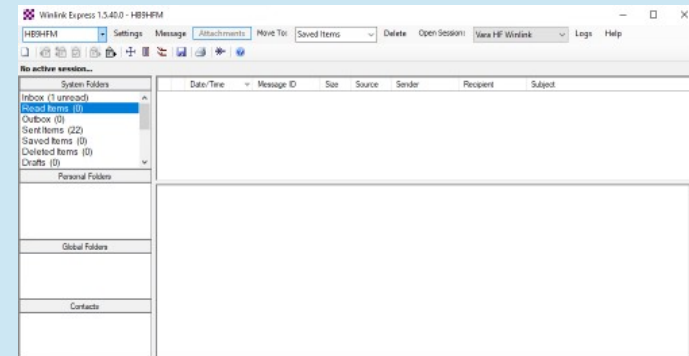
- VARA FM
- AX.25



Client Winlink HB9HFM

Winlink Express

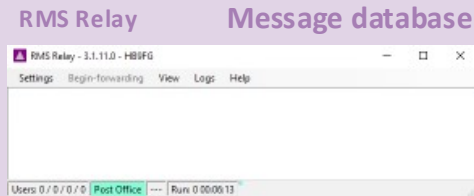
HF/VHF/UHF Mode





Server Winlink RMS 1/4

Server RMS HB9FG



Enregistrement auprès de
Registrierung bei
Steve Waterman "K4CJX"
<k4cjx@comcast.net>





Server Winlink RMS 2/4

RMS Relay – RMS Packet
Server Winlink - VHF-UHF

Server RMS HB9FG

RMS Relay Message database

RMS Packet VHF/UHF Mode

VARA FM





Server Winlink RMS 3/4

RMS Relay – RMS Trimode
Server Winlink - HF

Server RMS HB9FG

RMS Relay Message database

RMS Relay - 3.1.11.0 - HB9FG
Settings Begin-forwarding View Logs Help

Users: 0 / 0 / 0 / 0 | Post Office --- | Run: 0 00:00:13

RMS Trimode HF Mode

RMS Trimode - 1.3.4.0 - HB9FG

Settings Stop Scan Link About Logs Dial Freq MHz Center Freq kHz Bytes/Min

Robust Packet: Rcvd: 0 Posted: 0 Sent: 0 Disabled

Packet: Rcvd: 0 Posted: 0 Sent: 0 Disabled

Voice: Rcvd: 0 Posted: 0 Sent: 0 Vnc THX Initialized

ANDOR: Rcvd: 0 Posted: 0 Sent: 0 Disabled

Log: 2021-10-05 14:20:30 UTC
RMS Trimode is enabled to use RMS Relay. Searching for RMS Relay on 127.0.0.1:8010
TCP/IP Control Command and Control for RMS Relay on 127.0.0.1:8010
Vnc Driver started
Pendingly connects due to Vnc not set
Scanner start failed - holding 20 sec for THX startup
Vnc Driver Running
SdrFile mode via Internet (SFI) = Off On 2021-10-05 14:20 UTC

VARA Application

Settings View Log Window Help

Waterfall plot showing signal activity.

VU, CPU, APC, SNR gauges.

2000 PUBLIC LISTEN 127 12755.00



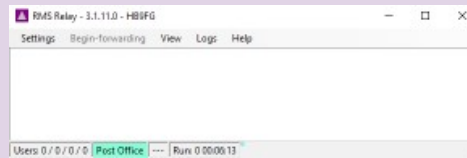


Server Winlink RMS 4/4

Server RMS HB9FG

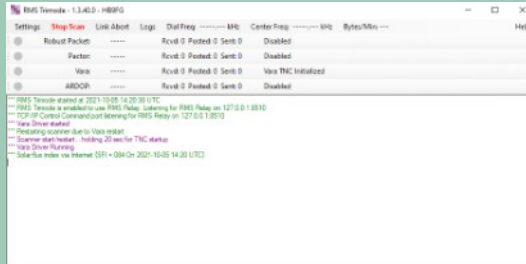
RMS Relay

Message database



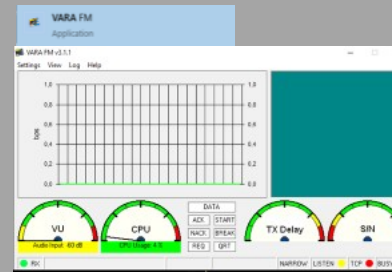
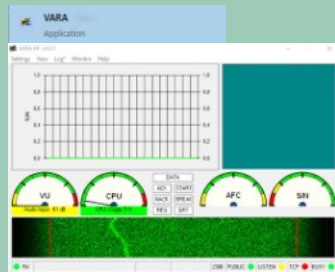
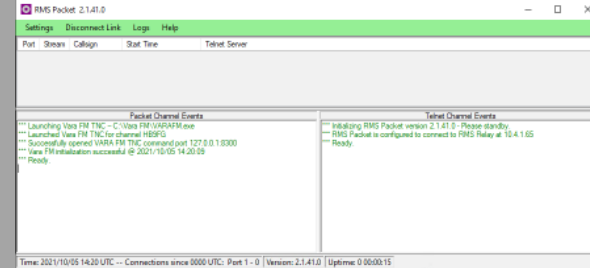
RMS Trimode

HF Mode



RMS Packet

VHF/UHF Mode





Configuration de base

CMS : Central Messaging Server
RMS : Radio Message Server



WINLINK

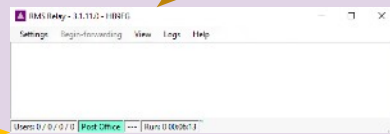
Global Radio Email®

No replication needed at this time

Server RMS HB9FG

Client Winlink HB9HFM

RMS Relay Message database

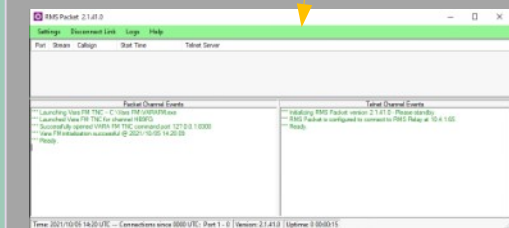


RMS Trimode

HF Mode

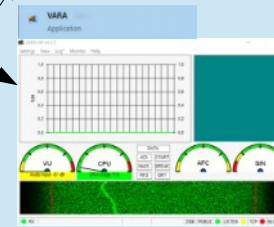
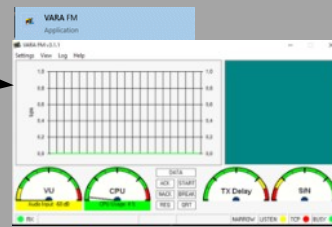
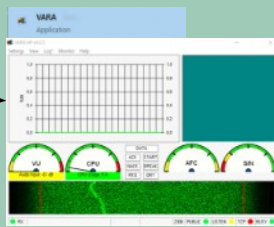
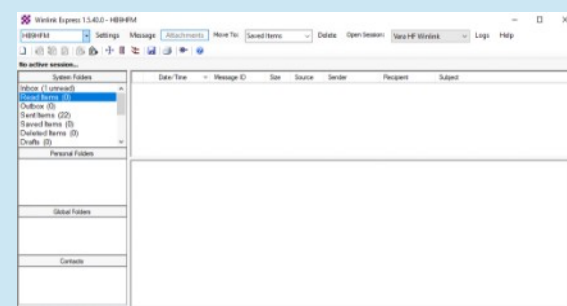
RMS Packet

VHF/UHF Mode



Winlink Express

HF/VHF/UHF Mode



only one service is possible simultaneously !



Liens

- The Winlink Book Knowledge
https://winlink.org/content/winlink_book_knowledge
- Winlink FAQ
https://winlink.org/content/winlink_faq_march_11_2023
- Introduction to Winlink
<https://www.youtube.com/watch?v=UTx9pY1Akl8>
- Winlink and RMS Express-EMCOM Capabilities
http://areslp.org/pfds/Winlink_capabilities.pdf
- What is Winlink
<https://www.youtube.com/watch?v=qGhUfW8pjY8>
- Winlink Glossary
<https://winlink.org/glossary>



Setup RMS Packet

VARA FM TNC Settings

Vara FM TNC Settings

Enable Vara FM TNC

Virtual TNC host address/name: 127.0.0.1

Virtual TNC Command Port: 8300 Data Port: 8301

Channel width: Narrow

VARA FM Modem location: C:\Vara FM\VARAFM.exe

Launch Vara FM TNC when RMS Packet starts

Vara FM Port Properties

| | |
|---------------------------------|-----------------------------|
| Port call sign: HB9FG-10 | Antenna Direction: OMNI |
| Port Frequency (MHz): 144,623 | Antenna Height AGL Feet: 25 |
| Power (Watts): 25 | Antenna Gain (db): 4 |

Optional Login Message:
Welcome to RMS HB9FG





Live Information 1/2

Live System Information

RMS Map

RMS List

Cnx Map

Prop Map

CMS Status

Traffic

RMS Ver.

User Ver.

Local

Map

Packet Factor Robust Packet ARDOP VARA VARAFM Service Code(s) EMCOMM [Refresh]

1

2

3

2M

Gateway Channel Information

Callsign: HB9FG-1
 Frequency: 144.621 MHz
 Gridsquare: JN36NT
 Antenna: Omni
 Operating Mode: VARAFM / VARA FM WIDE
 Operating Hours: 00-23
 Last Status Received: 2023-10-12 10:39 +02:00
 Comments:

Switzerland

Lausanne

Bern

Server - RMS



Live Information 2/2

Live System Information

- RMS Map
- RMS List**
- Cnx Map
- Prop Map
- CMS Status
- Traffic
- RMS Ver.
- User Ver.
- Local

Get Frequency (Channel **1**) for your client software here.

Service Codes determine displayed channels:

- PUBLIC** is the service code for maritime and open amateur radio use, including emergency gateways that are open to the public.
- EMCOMM** is for emergency gateways that do not allow public access.
- Other codes are used by groups who wish to keep gateway information private. If your group uses a special service code, please contact your group to obtain it. The Winlink Team does not distribute that information.

Stations listed in red have not yet applied to the [network administrator](#) for authorization. They are not available for service.

Inaccuracies should be reported to the gateway sysop. Hover over the callsign for their contact information.

Server - RMS

RMS Channel Information 10/12/2023 8:40:41 AM UTC [39]

- Refresh
- Frequency List
- CSV File
- KML File

- Packet
- Pactor
- Robust Packet
- ARDOP
- VARA
- VARA FM

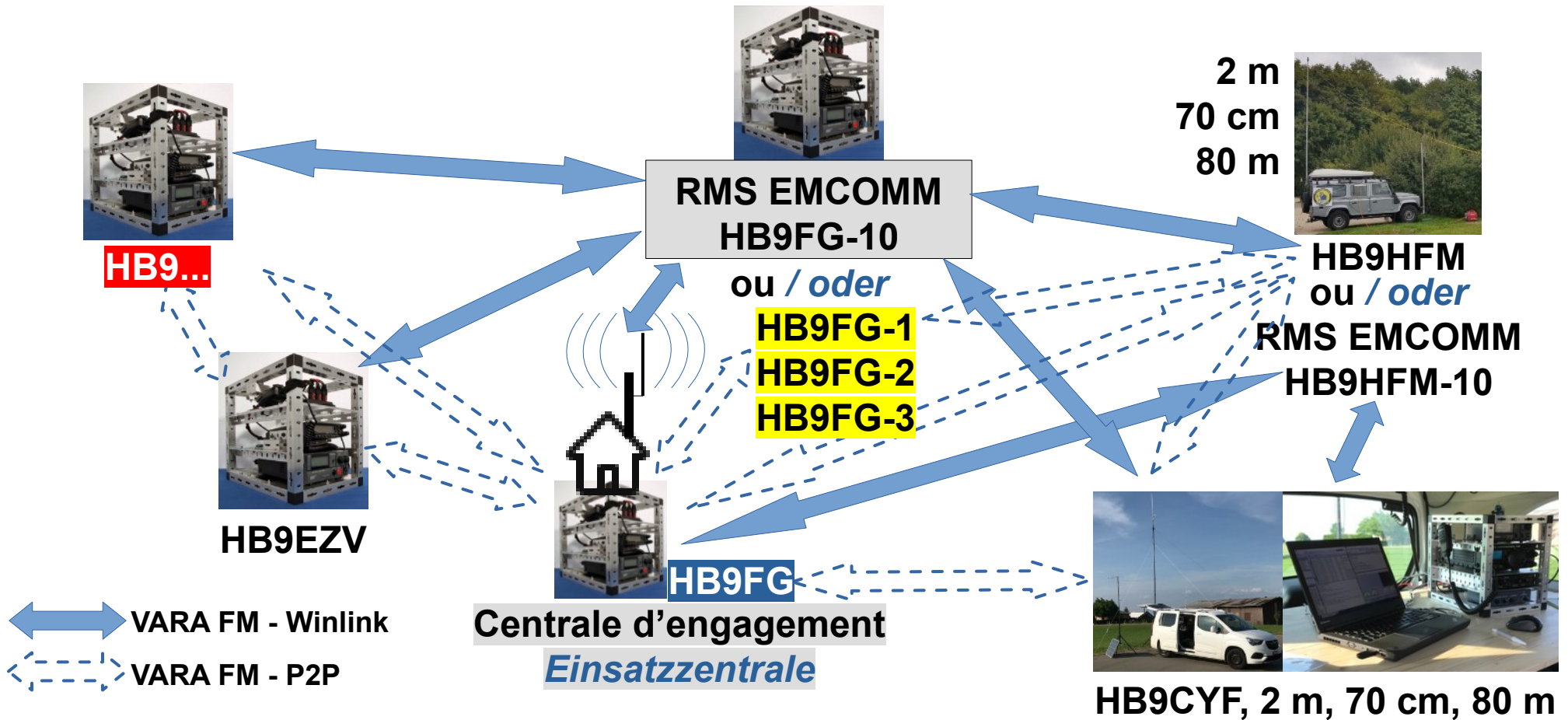
Service code(s): **EMCOMM**

| Posted | Callsign | Grid Square | Center Frequency | Mode | Hours | QTH |
|---------|---------------------------|-------------|------------------|--------------|-------|---------------------------------|
| 120706Z | AC6LS-10 | DM04WD | 145.070 MHz | VARA FM WIDE | 00-23 | Pasadena, CA, USA |
| 120706Z | AC6LS-10 | DM04WD | 431.050 MHz | VARA FM WIDE | 00-23 | Pasadena, CA, USA |
| 120731Z | AE7GQ-10 | CN85RO | 144.940 MHz | VARA FM WIDE | 00-23 | Vancouver, WA, US |
| 120718Z | AG6RS-10 | DM03WT | 145.030 MHz | VARA FM WIDE | 00-23 | Long Beach, CA, USA |
| 120815Z | AI4WU-10 | FM17PG | 145.730 MHz | VARA FM WIDE | 00-23 | Williamsburg, VA, United States |
| 120840Z | EA1URO-10 | IN62EI | 434.575 MHz | VARA FM | 00-23 | Ourense, Galicia, Spain |
| 120712Z | EA5URB-10 | IM98WN | 144.862 MHz | VARA FM WIDE | 00-23 | La Nucia, Alicante, Spain |
| 120649Z | ED9YAB | IM75HV | 144.835 MHz | VARA FM | 00-23 | CEUTA, CEUTA, SPAIN |
| 120839Z | HB9FG-1 | JN36NT | 144.621 MHz | VARA FM WIDE | 00-23 | Belfaux, FR, Switzerland |
| 120839Z | HB9FG-2 | JN36NT | 144.622 MHz | VARA FM WIDE | 00-23 | Belfaux, FR, Switzerland |
| 120840Z | HB9FG-3 | JN36NT | 144.623 MHz | VARA FM | 00-23 | Belfaux, FR, Switzerland |



La stratégie d'engagement / Strategie

6 unités mobiles / 6 mobile Notfunk-Einheiten





Question(s)

